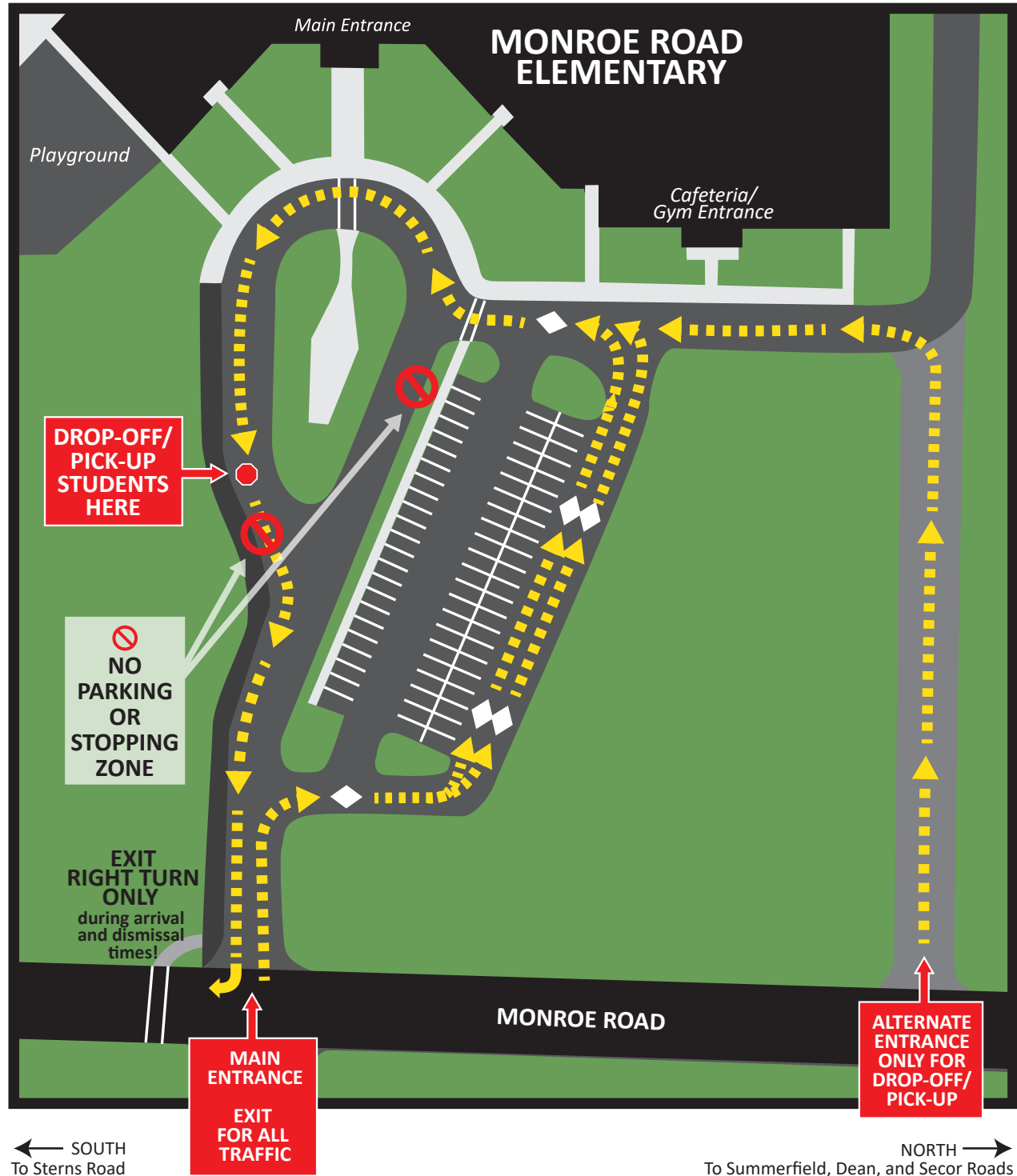


MONROE ROAD ELEMENTARY SCHOOL

Arrival/Dismissal Traffic Flow



The safety of our students is our priority! ALL students should be dropped off and picked up in the loop. Please do not park and walk up to the building. When entering using the main drive, please turn right into the parking area. Follow the painted diamonds and form 2 lanes around northern perimeter of the parking area along the edge of the field and merge into one lane once you reach the end of the parking area. Please alternate merging with those 2 lanes and the cars coming from the north side gravel drive. Follow the directions of the staff to proceed as far forward as possible to the designated drop-off/pick-up area. All students will enter/exit the building through the main entrance.

The gravel drive along the north side of the field will be open as an alternate entrance during drop-off and pick-times. Please follow the drive in front of the school and take turns merging with the waiting vehicles in line in the parking area on the south side of the field. After dropping off or picking up your child in the designated area, please exit by turning right onto Monroe Road using the main driveway.

Please do not park anywhere along the circle or its driveway. Thank you for your cooperation and patience!

Young 5/Kindergarten students can be picked up 5 minutes early.